

MISSIONS

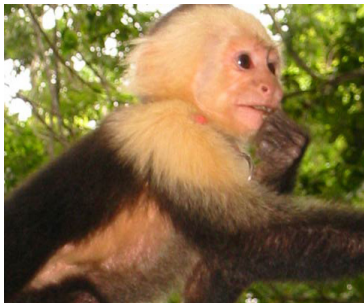
Cruise



7-Night Western Caribbean Cruise on the
ENCHANTMENT OF THE **SEAS**

FEBRUARY 24 - MARCH 2, 2024





Itinerary:

February 24 - Tampa, Florida, USA

Cruise from Tampa, FL and kick off the morning with a café con leche in the historic Cuban-Spanish neighborhood of Ybor City. Then, take the TECO Line Streetcar into the Channel District, where you can explore the Florida Aquarium or the SS American Victory, a World War II era ship turned museum.

February 25 - At Sea

February 26 - Puerto Costa Maya, Mexico

Past meets present in Costa Maya. Cruise to Costa Maya and find ancient Maya ruins and mysterious jungles just begging to be explored, as well as private beach clubs and trendy restaurants, all in one place. It's 250 square miles of paradise packed with entertainment and history, all just 30 miles south of Cancun. The Great Maya Reef just off the coast is the second largest in the world, it's a must-snorkel spot. Or you can kick back at the port village of Mahahual with an ice-cold michelada, a spicy beer cocktail, in hand. For a culture fix, head to the Kohunlick ruins to see the famous Temple of the Masks.

February 27 - Roatan, Honduras

Roatán's diverse blend of cultures and traditions is enough to charm anyone. But its mangrove forests, dense jungles, and swaths of white-sand beach will make you want to stay forever. Divers and snorkelers from all over the globe flock to the largest of Honduras's Bay Islands every year see to the world's second-largest barrier reef firsthand. Roatán cruises provide access to laid-back beach towns and secluded shores. On the Big Island, you can mingle with monkeys and "Jesus" lizards, snorkel with stingrays, and zipline through rainforest canopies. If it's culture you crave, the island's unique and vibrant blend is more than satisfying—made up of ex-pat sun seekers, Hondurans from the mainland, descendants of European settlers, and Garífuna, whose Afro-Carib-Arawak heritage still flavors centuries-old communities like Punta Gorda.



February 28 - Belize City, Belize

With all the heart of a Central American country and all the soul of a Caribbean isle, Belize and its bustling cruise port city open the door to a nation ripe for exploration. Here, you can choose your adventures, from trekking ancient Maya ruins to snorkeling the Belize Barrier Reef that teems with colorful fish and unforgettable coral formations. During your cruise to Belize, hike rainforest trails and take a zipline through lush treetops. Or hop on an inner tube and float through spectacular limestone caves and past tumbling waterfalls along the network of rivers flowing to the Caribbean. Divers and snorkelers come here from all over to explore the world's second-largest barrier reef and the famous Great Blue Hole. And along the 200-mile-long coastline, you'll find hundreds of tiny islets called cayes (pronounced "keys").

February 29 - Cozumel, Mexico

With its lively tropical reefs, crystal-clear waters and ancient ruins, Cozumel is ripe for one-of-a-kind adventures. Cruise to Cozumel and head to Chankanaab National Park, where you can snorkel among the colorful reefs and schools of tropical fish that give this island its premier diving status. Or travel back in time on an adventure through the towering Maya ruins of Tulum. When you're done exploring, unwind with a beachside massage at Playa Mia. From culture savoring to soaking up sunshine, you'll find a world of adventure waiting for you in Cozumel.

March 1 - At Sea

March 2 - Tampa, Florida, USA

Arrive in Tampa and disembark the ship with memories to last a lifetime!



ABOARD THE

ENCHANTMENT OF THE SEAS



CRUISE PRICING*

4V - INTERIOR STATEROOM	\$699*
4N - OCEAN VIEW STATEROOM	\$799*
3B - OCEAN VIEW STATEROOM WITH BALCONY	\$1,999*

*Rates are per person, based on double occupancy

*Does not include airfare, excursions, transfers to/from the port, cruise taxes

\$399 Program Fee + \$130 Cruise Taxes

\$21 TPA to Ship Transfer on 2/24 = T/O "D"
\$21 Ship to TPA Transfer on 3/2 = T/O "R"

Onboard Gratuities.
Approx \$112 per person.

Includes Mission Excursions

TRAVEL REGISTRATION FORM

Please mail completed form with payment and passport copy to:

Departure City: _____ Departure Date: **02/24/24 (M)**

First, Middle & Last Name must be submitted as it appears on your passport:

Guest 1: First Name: _____ (Name Tag: _____)
Middle Name: _____ Last Name: _____ Title: _____
Street Address: _____ P.O. Box: _____
City: _____ State: _____ Zip Code: _____
Dietary Restrictions: _____
Phone: _____ Alt. Phone: _____
Email: _____
Birth Date: ____/____/____ State of Birth: _____ Sex: M F
Emergency Contact: _____ Phone: _____
How did you learn about this tour? _____

Guest 2: First Name: _____ (Name Tag: _____)
Middle Name: _____ Last Name: _____ Title: _____
Street Address: _____ P.O. Box: _____
City: _____ State: _____ Zip Code: _____
Dietary Restrictions: _____
Phone: _____ Alt. Phone: _____
Email: _____
Birth Date: ____/____/____ State of Birth: _____ Sex: M F
Emergency Contact: _____ Phone: _____
How did you learn about this tour? _____

Cabin Selection: Interior Stateroom (4V) Ocean View Stateroom (4N)
 Ocean View Stateroom with Balcony(3B)

Alternate: _____ (Required, only used if 1st choice is unavailable)

Roommate(s): _____

If No Roommate: Try to Match Me Single Room (availability limited)

- Important Information Regarding Travel Protection Plan:**
- 1 Travel Protection coverage cannot be added after you have paid in full.
 - 2 Premium is based on TOTAL cost of trip and is non-refundable.
 - 3 Coverage begins when your premium payment is received (separate from deposit & clearly designated as your travel protection premium).
 - 4 Premium must be paid in full no later than 10/27/23.

Guest 1:
 I Accept I Decline
Guest 2:
 I Accept I Decline

**\$100 DEPOSIT PER PERSON REQUIRED WITH REGISTRATION
FINAL PAYMENT DUE 10/27/23**

Payment: \$ _____ via check: # _____

PASSENGER AGREEMENT

By signing and submitting the registration form, I/we certify that I/we have read Passenger Agreement, Program Conditions, and Statements of Responsibility of the brochure, understand its content, and agree to its terms including but not limited to the potential for price increases that may apply before payment in full has been received as set forth in the Program Conditions and Statements of Responsibility of the brochure and potential price increases after payment in full has been received due to government imposed taxes and fees.

Guest 1 Signature: _____

Guest 2 Signature: _____

Tour: TC24 Date: 022424 Code: M ID: _____ V.001 03/08/23

Travel Protection Plan - Premium Rates

For a full description of the plan, go to: www.tripmate.com/wpF427X

Trip Cost	Plan Cost	Trip Cost	Plan Cost	Trip Cost	Plan Cost	Trip Cost	Plan Cost
\$ 0 to \$1000	\$ 99	\$2501 to \$3000	\$299	\$4501 to \$5000	\$499	\$6501 to \$7000	\$699
\$1001 to \$1500	\$149	\$3001 to \$3500	\$349	\$5001 to \$5500	\$549	\$7001 to \$8000	\$799
\$1501 to \$2000	\$199	\$3501 to \$4000	\$399	\$5501 to \$6000	\$599	\$8001 to \$9000	\$899
\$2001 to \$2500	\$249	\$4001 to \$4500	\$449	\$6001 to \$6500	\$649	\$9001 to \$10,000	\$999

Schedule of Coverages Maximum Benefit

Part A *	Maximum Benefit
Trip Cancellation	Trip Cost
Part B	
Trip Interruption	Trip Cost
Missed Connection	\$500
Travel Delay (Up to 10 days up to \$200 Per Day)	\$2,000
Medical Expense / Emergency Evacuation	
Accident and Sickness Medical Expense	\$25,000
Emergency Evacuation and Repatriation	\$50,000
Accidental Death & Dismemberment	\$25,000
Baggage and Personal Effects	\$1,000
Baggage Delay	\$200

Part A - Travel Arrangement Benefits are provided by Educational Travel Services. Part B - Travel Protection Benefits are provided by United States Fire Insurance Co. *For New York Residents Only: Part A Benefits are travel arrangement benefits underwritten by United States Insurance Company.

Conditions and Limitations

This is a brief description of the plan available for all Travel Protection sales for Trips departing January 1, 2013 and after. Certain exclusions and limitations apply and are detailed in the Certificate of Coverage. For example, coverage does not apply to: any Sickness or condition of you, a Traveling Companion or a Family Member traveling with you that existed during the 60 days prior to the effective date of the coverages (The Pre-Existing Condition Exclusion is waived if payment for this plan is received by Educational Travel Services at or before the final payment due date for Your Trip or 105 days before departure date, whichever occurs first.), suicide, normal pregnancy, war or any act of war, Other Covered Reasons, as defined, includes the following events or their consequences: Cancellation or Interruption of your Trip due to: Inclement Weather, unannounced Strike, mechanical breakdown that causes complete cessation of services of Your Common Carrier for at least 12 consecutive hours; a documented traffic accident while en route to departure; being hijacked or quarantined; jury duty; destruction of your home or destination by fire, flood, burglary or natural disaster; being called to the emergency service of government to provide aid or relief in the event of a natural disaster; a documented theft of passports or visas; a transfer of employment of 250 miles or more; or Revocation of military leave. For further information ask for the Certificate of Coverage which fully details the coverages, provisions, limitations and exclusions of the plan offered and is available to you, upon request, at any time prior to your purchase of the plan. This plan is underwritten by: United States Fire Insurance Company, Eatontown, NJ. Benefits are administered by: Trip Mate, Inc., 9225 Ward Parkway, Suite 200, Kansas City, MO, 64114, 1-800-888-7292 (*in CA, dba Trip Mate Insurance Agency).

PROGRAM CONDITIONS

INCLUDED IN PRICE:

• Cruise Accommodations • Breakfast, lunch & dinner daily, on board the ship • Port charges \$190

NOT INCLUDED IN PRICE:

• Optional Travel Protection Program (see premium schedule) • \$399 Program Fee
• Cruise Government Taxes \$130 (Increases in cruise tax and fees are subject to change)
• Airfare to Tampa and Transfers to and from the ship for guests • Optional activities and excursions
• Miscellaneous fees such as passports, laundry, meals & beverages off of the ship and baggage fees
• Alternative restaurants with additional fees • \$100 Document fee for Non-US/Canadian residents
• Additional fuel surcharges which may be imposed by the cruise line or other suppliers

ACCOMMODATIONS:

Price is based on double occupancy. When available, single rooms/cabins are often smaller than doubles. While We will try to match roommates, We cannot guarantee one will be available. Roommates may be assigned as late as 35 days prior to departure and, if one is not available or if you request a single, the following single room/cabin charges apply: (4V) - \$699; (4N) - \$799; (3B) - \$1,999. Single staterooms are extremely limited and subject to confirmation.

PAYMENT INFORMATION:

Rates are per person, based on double occupancy.

PAYMENT SCHEDULE:

Payment	Amount	Due Date
Registration Deposit	\$200	Due at time of registration
2nd Deposit	\$300	2nd Deposit due 06/29/23
Final Payment	Full Payment	10/27/23 If paid after the due date, a late payment fee of \$100 will be assessed.
Travel Protection Premium Amount		The Travel Protection Plan premium will be due no later than 10/27/23 to be in full effect. Travel protection premiums must be paid in addition to your deposits and in advance of the final payment for coverage to be in effect.
Cabin Availability		After 06/29/23 or once we have sold out of our allotment of cabins we can no longer guarantee cabin pricing. Cabins purchased after this date will be subject to availability and may require a supplemental charge.

REGISTRATIONS RECEIVED after October 27, 2023:

We welcome registrations after 10/27/23. Registrations received between 10/28/23 - 11/26/23 will incur a \$100 per person fee. Registrations received between 11/27/23 - 12/11/23 will incur a \$200 per person fee. Registrations received between 12/12/23 - 12/26/23 will incur a \$400 per person fee. Registrations received 12/27/23 to departure or later will incur an additional fee based on air availability. Additional fees will be advised upon registration.

CANCELLATION FEES:

100% of Cancellation Fees are covered by the optional Travel Protection Program provided premium has been paid and reason for cancellation is coverable. Those who do not take travel protection should be aware of the following per-person cancellation penalties: From day of registration to 240 days prior to departure, you will be charged a \$100 non-refundable cancellation fee plus any airline fees. Additionally, thereafter, you will be charged any airline penalties and a single room supplement if your cancellation forces your roommate into a single plus the following per-person charges: 239-121 days = \$150; 120-91 days = 50% of total cost; 90-61 days = 75% of total cost; 60-day of departure = 100% of total cost. Submit cancellation in writing. On or after day of departure, there will be no refund for any services not used.

STATEMENTS OF RESPONSIBILITY

We do not accept responsibility for losses or additional expenses due to delay or changes in air schedules, hotel overbookings, other hotel related problems or causes, and/or travel supplier cancellations or postponements. Travel suppliers include all tour operators, cruise lines, airlines, hotels, bus companies, entertainment venues, and any other travel supplier used to operate the tour. All such losses or expenses will be the responsibility of the passenger. We reserve the right to make adjustments to the itinerary as we deem desirable, and we reserve the right to cancel any tour prior to departure. If a tour is canceled beyond our control, we will provide a refund or a future travel credit to be used two years from the date of issuance for the value of all funds paid by the passenger less nonrefundable travel supplier prepaid deposits, travel supplier change fees, nonrefundable travel protection premiums, and a \$150 administration fee.

FIT TO TRAVEL STATEMENT:

Passengers registering for the tour accept the responsibility for being in good health and able to walk and travel on the tour. Because many of the sites are not accessible to the physically challenged and space limitations on tour buses, wheelchairs and scooters cannot be accommodated. Those needing oxygen or other ambulatory assistance will find the tour extremely limiting in their experiences. Persons using C-pap machines requiring distilled water will need to inform us ahead of time, so we can work with local operators to prepare as it is not always available. We reserve the right to refuse or revoke travel to anyone who is, in our sole judgment, incapable of group travel without causing undue demands upon the staff or other tour participants. Accessible rooms/cabins are limited and subject to confirmation after receiving the passenger's written request. If you have questions, please contact us for more details.

PASSPORT INFORMATION & CHECK IN PROCESS:

Passport information must be submitted to our office no later than 10/27/23. Failure to provide your passport information to our office by this date may result in change fees or denial of travel. Discrepancies in information may result in change fees, delays in receiving travel documents for your trip, or denial of travel. Any fees incurred due to discrepancies are the responsibility of the passenger. You will also be required to check in with the cruise line prior to travel and according to the cruise line's requirements and instructions provided in your final documents.

PRICE INCREASES

All prices quoted in this brochure are subject to change prior to payment in full due to currency fluctuations, fuel surcharge increases, government taxes and fees increases or unforeseen circumstances. In addition, you may be subject to a price increase after payment in full has been received due to potential government imposed taxes and fees.

AIRLINE ROUTES AND TICKETS:

In order to keep prices low, we do not guarantee the most direct routing to your final destination. Once issued, airline tickets cannot be changed or refunded thereafter. Air transportation to/from your destination will be economy class on IATA and ARC carriers utilizing APEX or SUPER APEX non-refundable, non-amendable tickets for groups of 10 or more flying together on entire itinerary. If you choose to depart from a different city than your group or traveling companion, or deviate your flight and/or trip plans, and/or you are taking a pre or post tour, you may fly on a different scheduled flight(s) than the rest of your group. If you make your own air arrangements, you are responsible for booking all needed flights for your travel unless specified otherwise. Contact guest services for further details.

FLIGHT TIMES AND SEATING:

All flights are subject to change by the airlines without advance notice. We are not responsible for such changes or delays and do not reimburse expenses resulting from such delays. If you are making your own flight arrangements to the departure city, we recommend you purchase a ticket that can be exchanged without large penalties. There is no advance seat selection for groups on most airlines. Early check-in is necessary to secure seats with travel companions and those with special needs. Due to security measures taken at airports, it is advisable to arrive at the airport three hours prior to departure time. Seating is solely under the control of the airlines. You will receive your flight information 60-30 days prior to departure. Final documents are sent approximately 2-3 weeks prior to departure.

ADDITIONAL AIRLINE FEES:

You will likely incur additional airline checked baggage fees that are not included in the price of the tour. These fees vary by airline and are at the airline's discretion on each segment of the flight itinerary. You may also incur optional fees i.e. food, excess baggage, overweight baggage, items of personal nature, etc.

DEVIATIONS AND AIR UPGRADE REQUESTS:

Deviation and Air Upgrade requests must be submitted in writing and are subject to additional airline fees. Deviations and Air Upgrades are not always possible given the group schedule and time of ticketing. Passengers who are ticketed with air deviations and/or upgrades will likely not fly with the group and will therefore need to provide their own transfers.

ITINERARY CHANGES:

Every effort has been made to ensure the accuracy of this brochure. While we will make every effort to ensure you will see all sites listed in this brochure, the availability of sites, order of sites and/or days and number of days may be altered to accommodate changes in cruise line, airline, hotel schedules, and local conditions. No changes to the itinerary are effective unless approved in writing and signed by an authorized officer of the tour operator. Except as stated herein, no other person is authorized to cancel, modify or vary the tour arrangements or to make any representation of warranty concerning the tour. The cruise line has the ultimate control over your voyage and may, without notice, alter the length of the cruise and the order of and/or inclusion of ports. We are in no way responsible for these changes and do not make reimbursement for such changes.

PREGNANCY/INFANT REGULATIONS

As to pregnancy, a woman cannot have begun her 24th week of pregnancy at any time before or during the cruise. If you are pregnant, please provide a medical note upon arrival at the pier for check-in from your physician stating your expected due date and medical fitness to travel. If you are in the 24th week or have completed it you will not be allowed to board. Because of the limited medical facilities, infants must be at least 24 weeks (6 months) of age on the first day of the cruise and 1 year old for international cruises.

VALIDITY DATE:

This brochure is valid until 09/08/23. Registrations will still be accepted after the validity date.

RELEASE INFORMATION:

Payment of deposit indicates permission for us or our agents to record the registrant's participation and appearance on video tape, audio tape, film, photograph, or any other medium and to use the registrant's name, likeness, voice, comments, submitted documentation, written papers, and/or biographical material without restrictions or limitation for any advertising, marketing, publicity, educational or promotional purpose which we or our agents deem appropriate, unless the registrant or guardian otherwise notifies us in writing prior to departure.

Enrollment in, payment of deposit and/or acceptance of final documents, vouchers, or tickets shall be deemed to be consent to the Passenger Agreement and Program Conditions of the brochure. Prices are based on tariffs in effect as of January 1 of the previous year and are subject to adjustment without notice in the event of any change or currency fluctuation.

Except where otherwise stated, we act only as agent for the relevant supplier in securing hotels, transportation and other travel services and in no event shall we be liable for failure by any such supplier to render any transportation, lodging or other travel service to be provided on the tour. The passenger agrees that we assume no liability for injury, death, damage, loss, theft, accident, delay, any lost or damaged luggage, or irregularity which may occur by reason of any negligent or willful act or omission of any suppliers of services.

We do not own or operate any of the suppliers of services to your tour. Similarly without limiting the foregoing, passenger agrees to hold us harmless for any defect in any vehicle, plane, boat, bus, car, van or other vehicle, act of war or insurrection, terrorist activity, revolt or other civil uprising, military action, strikes or labor unrest, or any Act of God or for any other act of any third party.